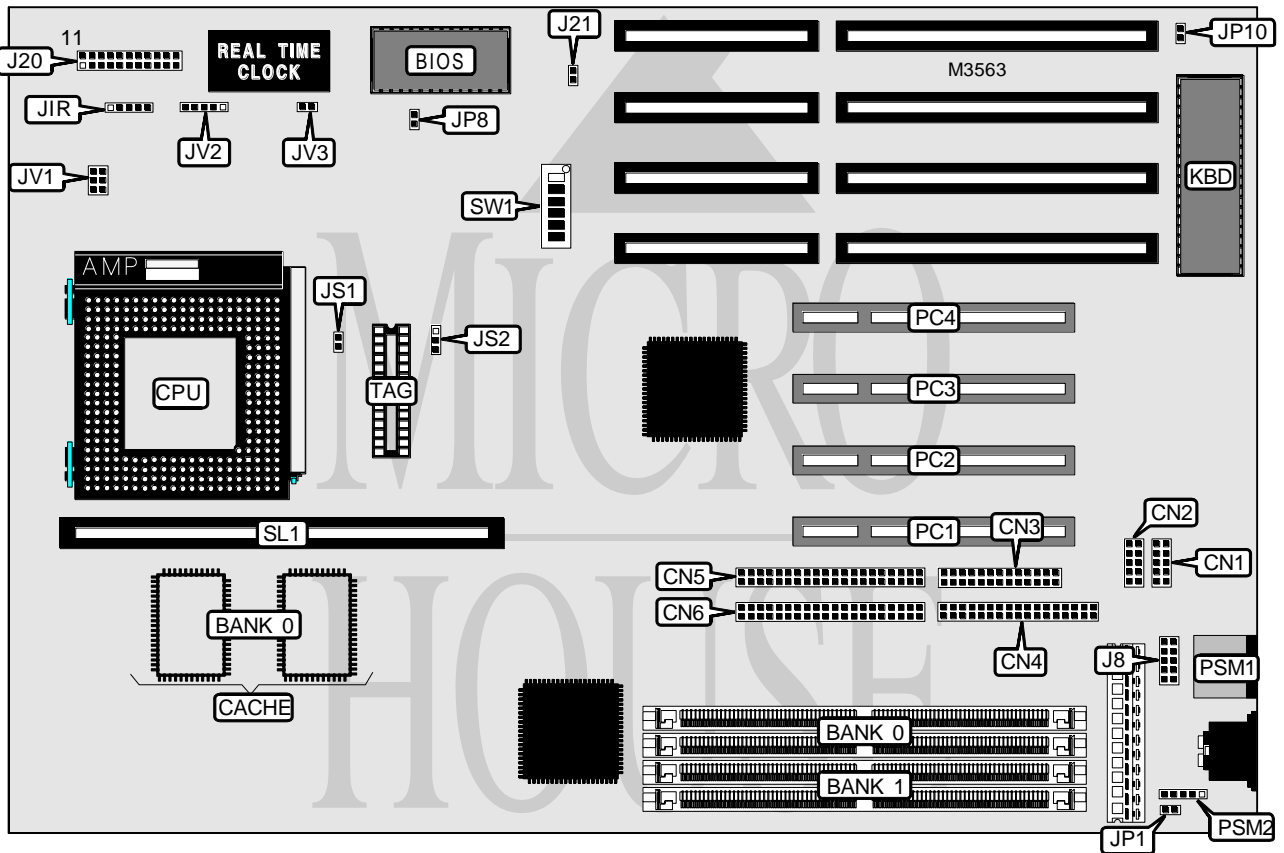


# MICRO-STAR INTERNATIONAL CO., LTD.

## MS-5128 (VER. 1.1)

<b>Processor</b>	CX M1/AM K5/Pentium
<b>Processor Speed</b>	75/90/100/120/133/150/166/180/200MHz
<b>Chip Set</b>	Intel
<b>Video Chip Set</b>	None
<b>Maximum Onboard Memory</b>	512MB (EDO supported)
<b>Maximum Video Memory</b>	None
<b>Cache</b>	256/512KB
<b>BIOS</b>	AMI/Award
<b>Dimensions</b>	280mm x 220mm
<b>I/O Options</b>	32-bit PCI slots (4), floppy drive interface, IDE interfaces (2), parallel port, PS/2 mouse interface, serial ports (2), cache slot, IR connector, USB connector
<b>NPU Options</b>	None



Continued on next page . . .

**MICRO-STAR INTERNATIONAL CO., LTD.**  
**MS - 5 1 2 8 ( V E R . 1 . 1 )**

... continued from previous page

CONNECTIONS			
Purpose	Location	Purpose	Location
Serial port 1	CN1	Turbo switch	J20 pins 15 - 17
Serial port 2	CN2	Reset switch	J20 pins 19 & 20
Parallel port	CN3	IDE interface LED	J20 pins 21 & 22
Floppy drive interface	CN4	Chassis fan power	J21
IDE interface 2	CN5	IR connector	J1R
IDE interface 1	CN6	32-bit PCI slots	PC1 - PC4
USB connector	J8	PS/2 mouse port	PSM1
Power LED & keylock	J20 pins 1 - 5	PS/2 mouse interface	PSM2
Speaker	J20 pins 7 - 10	Cache slot	SL1
Turbo LED	J20 pins 12 & 13		

USER CONFIGURABLE SETTINGS		
Function	Label	Position
í Factory configured - do not alter	JP1	Unidentified
í CMOS memory normal operation	JP8	Open
CMOS memory clear	JP8	Closed
í Factory configured - do not alter	JP10	Unidentified
í Factory configured - do not alter	JS2	Unidentified

DRAM CONFIGURATION		
Size	Bank 0	Bank 1
8MB	(2) 1M x 36	None
16MB	(2) 1M x 36	(2) 1M x 36
24MB	(2) 1M x 36	(2) 2M x 36
32MB	(2) 4M x 36	None
32MB	(2) 2M x 36	(2) 2M x 36
40MB	(2) 1M x 36	(2) 4M x 36
48MB	(2) 4M x 36	(2) 2M x 36
64MB	(2) 8M x 36	None
64MB	(2) 4M x 36	(2) 4M x 36
72MB	(2) 8M x 36	(2) 1M x 36
80MB	(2) 2M x 36	(2) 8M x 36
96MB	(2) 8M x 36	(2) 4M x 36
128MB	None	(2) 16M x 36
128MB	(2) 8M x 36	(2) 8M x 36
136MB	(2) 16M x 36	(2) 1M x 36
144MB	(2) 2M x 36	(2) 16M x 36
160MB	(2) 16M x 36	(2) 4M x 36
192MB	(2) 8M x 36	(2) 16M x 36
256MB	(2) 16M x 36	(2) 16M x 36

Continued on next page...

MICRO-STAR INTERNATIONAL CO., LTD.  
MS-5128 (VER. 1.1)

... continued from previous page

DRAM CONFIGURATION (CON'T)		
Size	Bank 0	Bank 1
264MB	(2) 1M x 36	(2) 32M x 36
272MB	(2) 2M x 36	(2) 32M x 36
288MB	(2) 4M x 36	(2) 32M x 36
320MB	(2) 8M x 36	(2) 32M x 36
384MB	(2) 16M x 36	(2) 32M x 36
512MB	(2) 32M x 36	(2) 32M x 36

Note: Board accepts EDO memory. Banks are interchangeable.

CACHE CONFIGURATION		
Size	Bank 0	SL1
256KB	(2) 32K x 32	None
512KB	(2) 32K x 32	256KB module installed

Note: The size of the TAG chip is unidentified.

CACHE JUMPER CONFIGURATION	
Setting	JS1
256KB	Open
512KB	Closed

CPU SPEED SELECTION (CYRIX)								
CPU speed	Clock speed	Multiplier	SW1/1	SW1/2	SW1/3	SW1/4	SW1/5	SW1/6
120MHz	50MHz	2x	Off	On	Off	Off	On	Off
133MHz	55MHz	2x	Off	On	Off	On	On	On
150MHz	60MHz	2x	Off	On	Off	Off	Off	On
166MHz	66MHz	2x	Off	On	Off	Off	Off	Off

CPU SPEED SELECTION (AMD)								
CPU speed	Clock speed	Multiplier	SW1/1	SW1/2	SW1/3	SW1/4	SW1/5	SW1/6
75MHz	50MHz	1.5x	Off	Off	Off	Off	On	Off
90MHz	60MHz	1.5x	Off	Off	Off	Off	Off	On
100MHz	66MHz	2x	Off	Off	Off	Off	Off	Off
120MHz	60MHz	2x	Off	On	Off	Off	Off	On
133MHz	66MHz	2x	Off	On	Off	Off	Off	Off

Continued on next page...

**MICRO-STAR INTERNATIONAL CO., LTD.**  
**MS-5128 (VER. 1.1)**

... continued from previous page

CPU SPEED SELECTION (INTEL)								
CPU speed	Clock speed	Multiplier	SW1/1	SW1/2	SW1/3	SW1/4	SW1/5	SW1/6
75MHz	50MHz	1.5x	Off	Off	Off	Off	On	Off
90MHz	60MHz	1.5x	Off	Off	Off	Off	Off	On
100MHz	66MHz	1.5x	Off	Off	Off	Off	Off	Off
120MHz	60MHz	2x	Off	On	Off	Off	Off	On
133MHz	66MHz	2x	Off	On	Off	Off	Off	Off
150MHz	60MHz	2.5x	Off	On	On	Off	Off	On
166MHz	66MHz	2.5x	Off	On	On	Off	Off	Off
180MHz	60MHz	3x	Off	Off	On	Off	Off	On
200MHz	66MHz	3x	Off	Off	On	Off	Off	Off

CPU VOLTAGE SELECTION			
Voltage	JV1	JV2	JV3
2.8v - 2.9v (P55)	Open	1 & 2, 4 & 5	Open
3.3v - 3.45v (STD/VR)	1 & 2, 3 & 4, 5 & 6	3 & 4	Open
3.45v - 3.6v (VRE)	1 & 2, 3 & 4, 5 & 6	3 & 4	Closed

Note: Pins designated should be in the closed position.