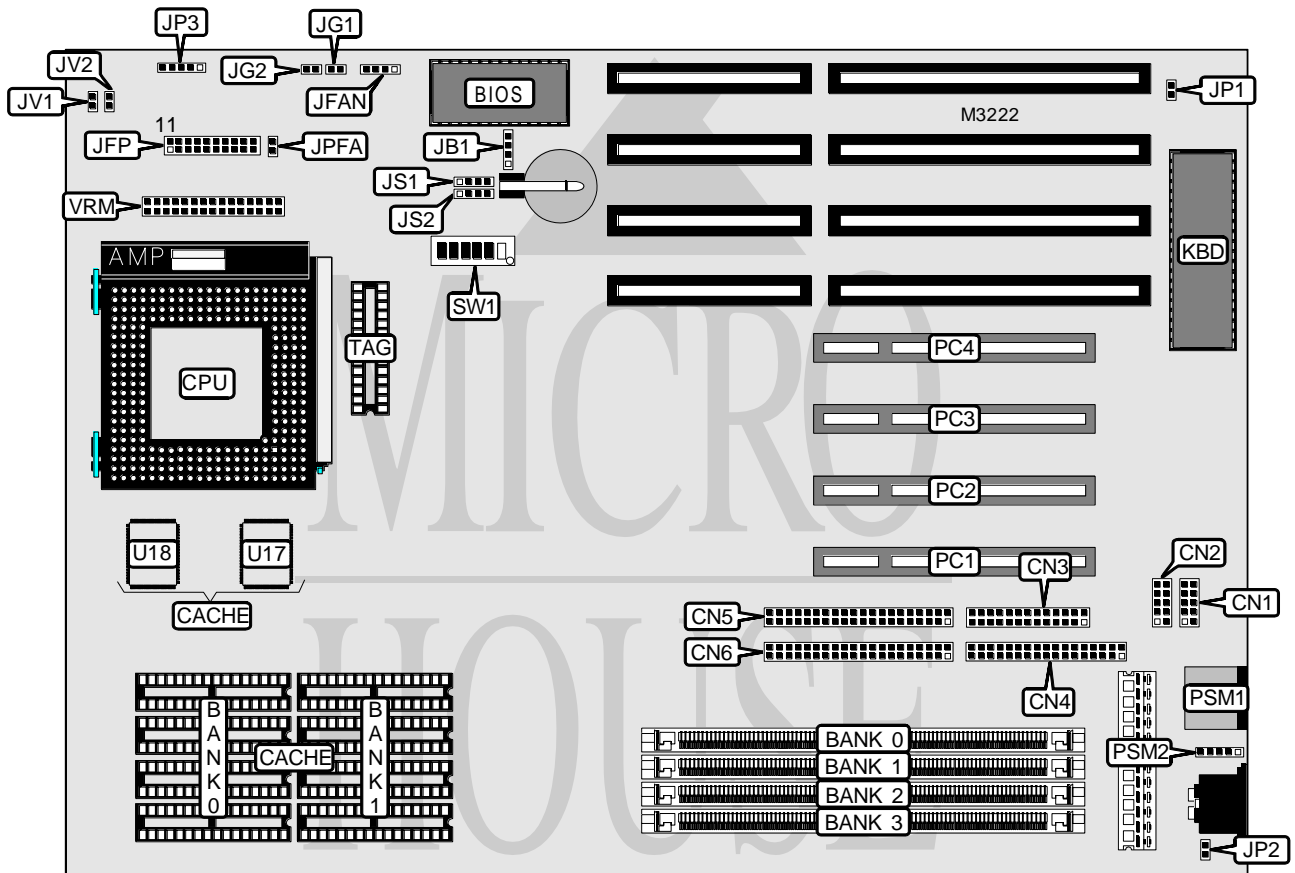


COMPUTREND SYSTEMS, INC. PREMIO PCI PENTIUM S17

Processor	Pentium
Processor Speed	75/90/100/120/133MHz
Chip Set	SIS
Max. Onboard DRAM	128MB
Cache	256/512/1024KB
BIOS	AMI
Dimensions	280mm x 220mm
I/O Options	32-bit PCI slots (4), floppy drive interface, green PC connector, IDE interfaces (2), parallel port, PS/2 mouse port, serial ports (2), VRM connector
NPU Options	None



Continued on next page. . .

COMPUTREND SYSTEMS, INC.

PREMIO PCI PENTIUM S17

... continued from previous page

CONNECTIONS			
Purpose	Location	Purpose	Location
Serial port 1	CN1	Speaker	JFP pins 7 - 10
Serial port 2	CN2	Turbo LED	JFP pins 12 & 13
Parallel port	CN3	Turbo switch	JFP pins 15 - 17
Floppy drive interface	CN4	Reset switch	JFP pins 19 & 20
IDE interface	CN5	Green PC connector	JG1
IDE interface	CN6	Green PC LED	JG2
External battery	JB1	PS/2 mouse port	PSM1
Chassis fan power	JFAN	PS/2 mouse interface	PSM2
IDE interface LED	JFPA	32-bit PCI slots	PC1 - PC4
Power LED & keylock	JFP pins 1 - 5	VRM connector	VRM

USER CONFIGURABLE SETTINGS		
Function	Jumper	Position
í Factory configured - do not alter	JP1	N/A
í Factory configured - do not alter	JP2	N/A
í Factory configured - do not alter	JP3	N/A

DRAM CONFIGURATION				
Size	Bank 0	Bank 1	Bank 2	Bank 3
4MB	(1) 1M x 36	NONE	NONE	NONE
8MB	(1) 2M x 36	NONE	NONE	NONE
8MB	(1) 1M x 36	(1) 1M x 36	NONE	NONE
8MB	NONE	NONE	(1) 1M x 36	(1) 1M x 36
16MB	(1) 4M x 36	NONE	NONE	NONE
16MB	(1) 2M x 36	(1) 2M x 36	NONE	NONE
16MB	(1) 1M x 36	(1) 1M x 36	(1) 1M x 36	(1) 1M x 36
16MB	NONE	NONE	(1) 2M x 36	(1) 2M x 36
20MB	(1) 1M x 36	(1) 4M x 36	NONE	NONE
20MB	(1) 4M x 36	(1) 1M x 36	NONE	NONE
20MB	NONE	NONE	(1) 1M x 36	(1) 4M x 36
20MB	NONE	NONE	(1) 4M x 36	(1) 1M x 36
24MB	(1) 1M x 36	(1) 1M x 36	(1) 2M x 36	(1) 2M x 36
24MB	(1) 2M x 36	(1) 2M x 36	(1) 1M x 36	(1) 1M x 36
32MB	(1) 8M x 36	NONE	NONE	NONE
32MB	(1) 4M x 36	(1) 4M x 36	NONE	NONE
32MB	NONE	NONE	(1) 4M x 36	(1) 4M x 36
32MB	(1) 2M x 36	(1) 2M x 36	(1) 2M x 36	(1) 2M x 36
40MB	(1) 2M x 36	(1) 8M x 36	NONE	NONE
40MB	(1) 8M x 36	(1) 2M x 36	NONE	NONE
40MB	(1) 1M x 36	(1) 1M x 36	(1) 4M x 36	(1) 4M x 36
40MB	(1) 4M x 36	(1) 4M x 36	(1) 1M x 36	(1) 1M x 36
40MB	NONE	NONE	(1) 2M x 36	(1) 8M x 36
40MB	NONE	NONE	(1) 8M x 36	(1) 2M x 36

Continued on next page. . .

COMPUTREND SYSTEMS, INC.

PREMIO PCI PENTIUM S17

... continued from previous page

DRAM CONFIGURATION (CON'T)				
Size	Bank 0	Bank 1	Bank 2	Bank 3
48MB	(1) 4M x 36	(1) 4M x 36	(1) 2M x 36	(1) 2M x 36
48MB	(1) 2M x 36	(1) 2M x 36	(1) 4M x 36	(1) 4M x 36
60MB	(1) 1M x 36	(1) 4M x 36	(1) 2M x 36	(1) 8M x 36
60MB	(1) 4M x 36	(1) 1M x 36	(1) 8M x 36	(1) 8M x 36
64MB	(1) 8M x 36	(1) 8M x 36	NONE	NONE
64MB	(1) 4M x 36	(1) 4M x 36	(1) 4M x 36	(1) 4M x 36
64MB	NONE	NONE	(1) 8M x 36	(1) 8M x 36
72MB	(1) 1M x 36	(1) 1M x 36	(1) 2M x 36	(1) 8M x 36
72MB	(1) 4M x 36	(1) 4M x 36	(1) 2M x 36	(1) 8M x 36
72MB	(1) 8M x 36	(1) 8M x 36	(1) 1M x 36	(1) 1M x 36
80MB	(1) 2M x 36	(1) 2M x 36	(1) 8M x 36	(1) 8M x 36
80MB	(1) 8M x 36	(1) 8M x 36	(1) 2M x 36	(1) 2M x 36
96MB	(1) 8M x 36	(1) 8M x 36	(1) 4M x 36	(1) 4M x 36
128MB	(1) 8M x 36	(1) 8M x 36	(1) 8M x 36	(1) 8M x 36

Note: Board will accept EDO and FP DRAM modules.

CACHE CONFIGURATION				
Size	Bank 0	Bank 1	U17 & U18	TAG
256KB (A)	(4) 32K x 8	(4) 32K x 8	NONE	(1) 8K/16K x 8
256KB (B)	NONE	NONE	(2) 32K x 32	(1) 8K/16K x 8
512KB (A)	(4) 64K x 8	(4) 64K x 8	NONE	(1) 16K x 8
512KB (B)	(4) 64K x 8	(4) 64K x 8	NONE	(1) 16K x 8
1MB	(4) 128K x 8	(4) 128K x 8	NONE	(1) 32K x 8

CACHE JUMPER CONFIGURATION		
Size	JS1	JS2
256KB (A)	Pins 1 & 2 closed	Pins 2 & 3 closed
256KB (B)	Pins 3 & 4 closed	Pins 2 & 3 closed
512KB (A) (128AK)	Pins 3 & 4 closed	Pins 3 & 4 closed
512KB (B) (129AK)	Pins 2 & 3 closed	Pins 2 & 3 closed
1MB	Pins 2 & 3 closed	Pins 1 & 2 closed

CPU SPEED CONFIGURATION						
Speed	SW1/1	SW1/2	SW1/3	SW1/4	SW1/5	SW1/6
75MHz	Off	Off	Off	Off	Off	On
80MHz*	On	On	Off	Off	On	Off
90MHz	Off	Off	Off	On	Off	On
100MHz	Off	Off	Off	On	On	On
120MHz*	On	Off	Off	Off	On	Off
120MHz	Off	On	Off	On	Off	On
133MHz	Off	On	Off	On	On	On

Note: 80MHz* & 120MHz* are reserved for future CX M1 CPU's.

Continued on next page. . .

COMPUTREND SYSTEMS, INC.
PREMIO PCI PENTIUM S17

... continued from previous page

CPU VOLTAGE CONFIGURATION		
Voltage	JV1	JV2
3.38v	Closed	Closed
3.52v	Open	Closed