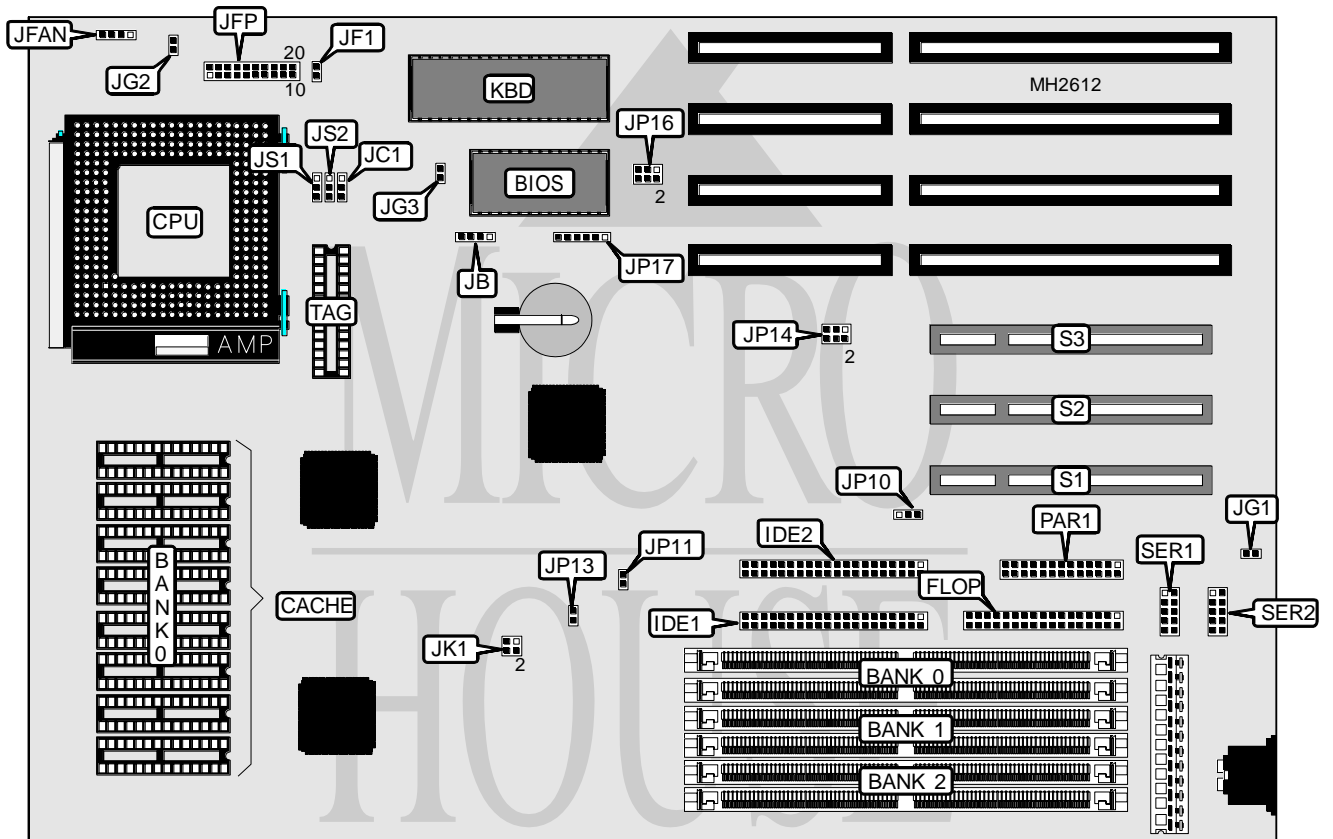


# MICRO-STAR INTERNATIONAL CO., LTD.

## MS - 5108

<b>Processor</b>	Pentium
<b>Processor Speed</b>	60/66MHz
<b>Chip Set</b>	SIS
<b>Max. Onboard DRAM</b>	128MB
<b>Cache</b>	256/512/1024KB
<b>BIOS</b>	AMI
<b>Dimensions</b>	330mm x 220mm
<b>I/O Options</b>	32-bit PCI slots (3), floppy drive interface, green PC connector, IDE interface (2), parallel port, serial ports (2)
<b>NPU Options</b>	None



CONNECTIONS			
Purpose	Location	Purpose	Location
Floppy drive interface	FLOP	Turbo LED	JFP (pins 12 - 13)
IDE interface (primary)	IDE1	Turbo switch	JFP (pins 15 - 17)
IDE interface (secondary)	IDE2	Reset switch	JFP (pins 19 - 20)
External battery	JB	Green PC connector (monitor)	JG1
IDE interface LED	JF1	Green PC LED	JG2
Chassis fan power	JFAN	Green PC connector	JG3
Keylock	JFP (pins 1 & 2)	Parallel port	PAR1
Power LED	JFP (pins 3 & 5)	32-bit PCI slots	S1 - S3
Green PC LED	JFP (pins 3 & 4)	Serial port 1	SER1
Speaker	JFP (pins 7 & 10)	Serial port 2	SER2
Sleep switch connector	JFP (pins 8 & 9)		

Continued on next page. . .

**MICRO-STAR INTERNATIONAL CO., LTD.**  
**MS - 5108**

... continued from previous page

USER CONFIGURABLE SETTINGS		
Function	Jumper	Position
í NA# disabled	JC1	pins 1 & 2 closed
NA# enabled	JC1	pins 2 & 3 closed
í PCI IDE interface enabled	JP10	pins 1 & 2 closed
PCI IDE interface disabled	JP10	pins 2 & 3 closed
í PCI IDE Digital Input Register enabled	JP11	Open
PCI IDE Digital Input Register disabled	JP11	Closed
í PCI IDE register select 0B4h, 0B8h	JP13	Open
PCI IDE register select 034h, 038h	JP13	Closed
í BIOS type select EPROM	JP17	pins 2 & 3, 4 & 5 closed
BIOS type select flash BIOS	JP17	pins 1 & 2, 5 & 6 closed

DRAM CONFIGURATION			
Size	Bank 0	Bank 1	Bank 2
2MB	(2) 256K x 36	NONE	NONE
4MB	(2) 256K x 36	(2) 256K x 36	NONE
4MB	(2) 512K x 36	NONE	NONE
8MB	(2) 256K x 36	(2) 256K x 36	(2) 512K x 36
8MB	(2) 512K x 36	NONE	(2) 512K x 36
8MB	(2) 1M x 36	NONE	NONE
12MB	(2) 256K x 36	(2) 256K x 36	(2) 1M x 36
12MB	(2) 512K x 36	NONE	(2) 1M x 36
16MB	(2) 1M x 36	(2) 1M x 36	NONE
16MB	(2) 2M x 36	NONE	NONE
20MB	(2) 256K x 36	(2) 256K x 36	(2) 2M x 36
20MB	(2) 512K x 36	NONE	(2) 2M x 36
24MB	(2) 1M x 36	(2) 1M x 36	(2) 1M x 36
24MB	(2) 2M x 36	NONE	(2) 1M x 36
32MB	(2) 1M x 36	(2) 1M x 36	(2) 2M x 36
32MB	(2) 2M x 36	NONE	(2) 2M x 36
32MB	(2) 4M x 36	NONE	NONE
36MB	(2) 256K x 36	(2) 256K x 36	(2) 4M x 36
36MB	(2) 512K x 36	NONE	(2) 4M x 36
40MB	(2) 1M x 36	(2) 4M x 36	NONE
48MB	(2) 1M x 36	(2) 1M x 36	(2) 4M x 36
48MB	(2) 2M x 36	NONE	(2) 4M x 36
64MB	(2) 4M x 36	(2) 4M x 36	NONE
64MB	(2) 8M x 36	NONE	NONE
72MB	(2) 1M x 36	(2) 4M x 36	(2) 4M x 36
80MB	(2) 1M x 36	(2) 1M x 36	(2) 8M x 36
80MB	(2) 2M x 36	NONE	(2) 8M x 36
96MB	(2) 4M x 36	(2) 4M x 36	(2) 4M x 36
96MB	(2) 8M x 36	NONE	(2) 4M x 36
128MB	(2) 4M x 36	(2) 4M x 36	(2) 8M x 36
128MB	(2) 8M x 36	NONE	(2) 8M x 36
128MB	(2) 16M x 36	NONE	NONE

Continued on next page. . .

MICRO-STAR INTERNATIONAL CO., LTD.  
MS - 5 1 0 8

... continued from previous page

CACHE CONFIGURATION		
Size	Bank 0	TAG
256KB	(8) 32K x 8	(1) 8K or (1) 16K or (1) 32K x 8
512KB	(8) 64K x 8	(1) 16K or (1) 32K x 8
1MB	(8) 128K x 8	(1) 32K x 8

CACHE JUMPER CONFIGURATION		
Size	JS1	JS2
256KB	pins 1 & 2 closed	pins 1 & 2 closed
512KB	pins 2 & 3 closed	pins 1 & 2 closed
1MB	pins 2 & 3 closed	pins 2 & 3 closed

CPU SPEED CONFIGURATION		
Normal mode speed	Green mode speed	JK1
60MHz	30MHz	pins 3 & 4 closed
66MHz	33MHz	pins 1 & 2, 3 & 4 closed
60MHz	60MHz	Open
66MHz	66MHz	pins 1 & 2 closed

DACK/DRQ CONFIGURATION		
Setting	JP14	JP16
DACK#0/DREQ0	pins 1 & 2 closed	pins 1 & 2 closed
DACK#1/DREQ1	pins 3 & 4 closed	pins 3 & 4 closed
DACK#3/DREQ3	pins 5 & 6 closed	pins 5 & 6 closed